

Your Solution Partner

OFFERING OUR SERVICES THROUGH A WIDE NETWORK OF INTERNATIONAL COMPANIES AND SUBSIDIARIES

OFF SHORE TRADING

FTC S.A.L. Offshore

JORDAN
Loreen Cooling
Equipment

GREECE
FTC Europe

QATAR
FTC Qatar W.L.L
BES Qatar W.L.L

KSA
FTC GULF

IVORY COAST
Afrigel Ouest

LEBANON
Farjallah Trading Company s.a.l
Iceberg s.a.l
Ammonia Cooling Systems s.a.l
Optimised Logistic Solutions s.a.l

UAE
FTC M.E



REFRIGERATION



COPELAND Compressors

Copeland's unique patented design, lowest sound, and highest efficiency makes it the most durable compressor available on the market.



FRIGA-BOHN Evaporators HeatCraft

Evaporators & refrigeration equipment for low & medium temperature application. Power packed with any centralized refrigeration system for industrial & commercial use.



KINGSPAN Cold Store, Insulated Wall & Roof Panels

Fire safe Quadcore insulation technology across the architectural wall, trapezoidal roof and wall ranges and cold stores.



MTH Cold Storage Door

FTC has the reputation for production of the most reliable custom made cold stores doors, using exclusively, MTH Italian parts & accessories.



MISA Modular Refrigeration Rooms

MISA is the leading European company in the production of prefabricated cold rooms for industrial and commercial registration.



DANFOSS Pressure Independent Balancing Control Valves

Wide range of pressure and temperature regulating valves for Commercial and Industrial Refrigeration Application.



ELUMA Copper Tubes

ELUMA copper tubes for heating, water supply, cooling, natural gas transport, air-conditioning and industrial uses. Produced by Paranapanema Brazil.



ICEBERG Refrigeration Equipments

Innovation lines of water tank coolers, Swimming pool heat pumps and tropicalized condensing units equipped with Copeland range of hermetic and semi-hermetic compressors.

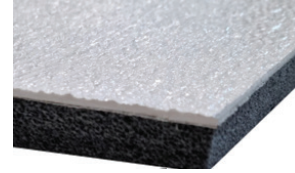
MECHANICAL CONTRACTING PRODUCTS



THERMOBREAK

Thermal Insulation

“All in one” flexible thermal insulation made from physically crosslinked closed cell polyolefin foam for duct, pipe, tank, under slab, raised floor, wall and roof insulation.



HYGIBREAK

Glasbord Composite Panels with Thermobreak Backing

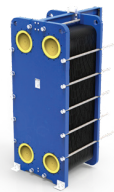
Hygibreak is a combination of Crane Glasbord® FRP panel coated with Surfaseal® film backed with Thermobreak® physically crosslinked insulation assembled to make a unique cladding and self adhesive direct fix hygienic panel.



PROMAT

Fire Protection Board and Penetration Seals

Steel protection, smoke barrier, fire resistant ceilings, ventilation & smoke extraction ductwork plenums, & fire compartment walls.



SONDEX

Heat Exchangers

Sondex delivers standard, copper brazed, semi-welded and all-welded plate heat exchangers as well as customized heat transfer solutions.



DINAK

Stainless Steel Chimneys

Chimneys and metallic flues for industrial and building sectors. A wide product range that includes a wide range of flue, chimney and exhaust solution.

TRUCK BOX



ICEBERG

Chilled and Dry Transportation Box

Chilled & Dry transportation boxes with refrigeration equipment

AIR CONDITIONING & ACCESSORIES



MDV BY MIDEA Residential Units

Elegant and quiet design
Capacity from 9,000 to 36,000 btu/h
Standard and Mirror type look
Latest technological features including Wi-Fi control



MIDEA Light Commercial Units

- Superior quality. Leading industry standards. High Performance.
- Extensive testing & quality control. Innovative R&D.
 - Wide choice of elegant decorative units.
- Ducted High and Low Static Pressure Series.
- All models available as On/Off or Inverter.



MIDEA All DC Inverter VRF Units

- Complete lineup of VRF from 8HP to 96HP
 - Heat Recovery series (3 pipe)
- Mini unitary type side discharge from 8 to 45 kW
 - Full range of indoor units both AC and DC
- Full control : Unitary controllers, Centralized Controllers, BMS Gateways



MIDEA Commercial Units

- Modular Scroll Chillers - 30 to 250 kW
- Air & water cooled screw chillers - 380 to 1420 kW
- Centrifugal chillers - 600 to 2200 RT
 - Rooftop Packed Units - 3 to 30 RT
- Fan Coil Units and Air Handling Units



DANTHERM Dehumidifiers

Dehumidifiers with capacities from 12 to 290 liters/day for: Domestic Pools & Water Areas.

WAREHOUSE EQUIPMENT & SOLUTIONS



STOW Storage Solutions

As a leader in the warehouse equipment field, our aim is to develop static and automated storage solutions, for palletized goods, medium and small items.



LOADING SYSTEMS Dock equipment & Industrial Doors

Complete program of products and services for loading and unloading: Dock Leveller, Dock Shelter, Sectional Doors and accessories.



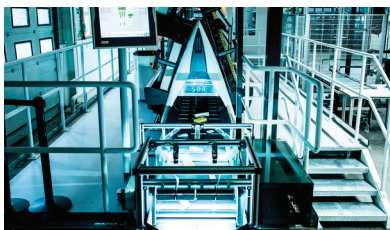
DYNACO High Performance Doors

A leader in the industry: Reliable, maintenance friendly and safe high speed roll up doors, designed to operate 24/7 under intensive use and extreme conditions.



STILL Material Handling Equipment

Founded in 1920 in Germany, Still distributes and supplies forklift trucks, platform trucks, tractors, and warehouse handling equipment for intralogistics.



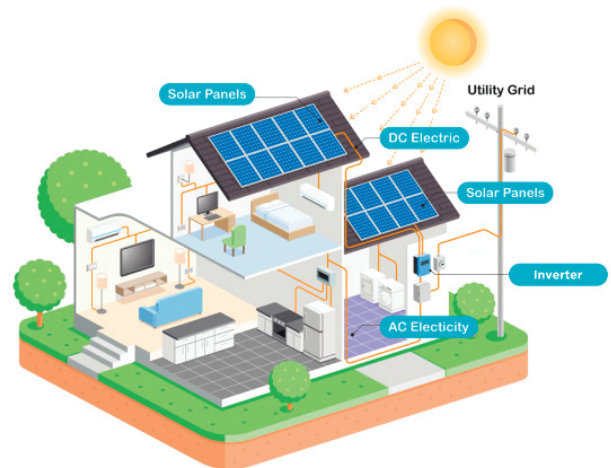
OPTIMIZED LOGISTIC SOLUTIONS Supply Chain Consulting

OLS offers Logistics and supply chain consulting, software, and automation

RENEWABLE ENERGY

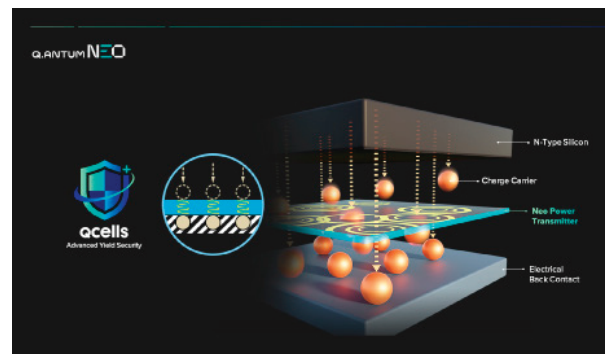
Activities

- Energy Assessment
- Planning On-Grid & Off-Grid Commercial & Industrial Energy Solutions
- Execution
- Personnel technical Training
- Efficiency Monitoring



PV Panels & Installation Accessories

- Q-Cells PV Panels 580W tough industrial grade guaranteed to give you the best possible production.
- PV Panels mounting racks



Inverters & Electrical Components

- 110KW string inverters
- 30KW standalone micro grid with ESS
- 15kw 3 phase full hybrid industrial inverter
- 8 and 11kw monophasic inverters with smart load
- Residential full hybrid 5kw inverters
- Axis Earthing components
- Electrical components breakers



Batteries

- 6000+ Cycles CATL Lithium Batteries
- 12V 250A C10 Tubular Batteries





Refrigeration



Insulation



Fire Protection



Hygiene Systems



Renewable Energy



Air Conditioning



Air Handling



Racking



Industrial Doors



Material Handling



Spare Parts



Maintenance

Head Office: Georges Fattal Street - Jisr El Wati - Sin El Fil, Lebanon
Central Warehouse: Al Rihab Street - Maallaqah - Zahle - Bekaa, Lebanon
Factory: Regie Street - Hadath - Baabda, Lebanon

Tel : +961 1 493000
info@farjallah.com

Fax : +961 1 485583
www.farjallah.com